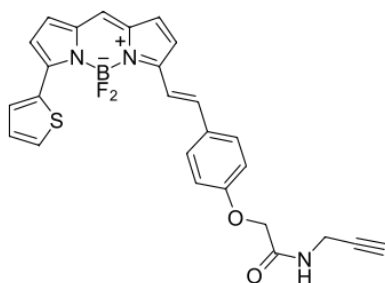


BDP 630/650 alkyne

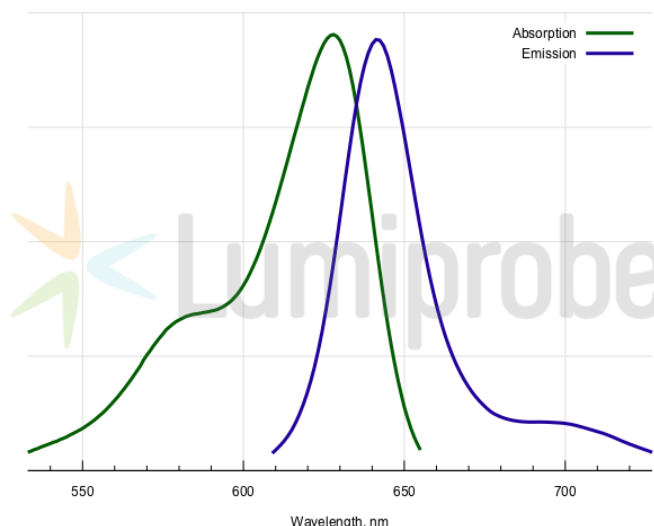
<http://www.lumiprobe.com/p/bdp-630-650-alkyne>

BDP 630/650 is a red-emitting fluorophore matching the Cyanine5 channel. The dye is useful for fluorescence polarization assays. It is also remarkably photostable.

The terminal alkyne group can be conjugated with various azides by copper-catalyzed click chemistry.



Structure of BDP 630/650 Alkyne



Absorption and emission spectra of BDP 630/650

General properties

Appearance:	dark colored solid
Mass spec M ⁺ increment:	487.1
Molecular weight:	487.33
CAS number:	2006345-38-4
Molecular formula:	C ₂₆ H ₂₀ N ₃ BF ₂ O ₂ S
Solubility:	good in DMF, DMSO, alcohols
Quality control:	NMR ¹ H, HPLC-MS (95%)
Storage conditions:	Storage: 24 months after receipt at -20°C in the dark. Transportation: at room temperature for up to 3 weeks. Avoid prolonged exposure to light. Desiccate.
Legal statement:	This Product is offered and sold for research purposes only. It has not been tested for safety and efficacy in food, drug, medical device, cosmetic, commercial or any other use. Supply does not express or imply authorization to use for any other purpose, including, without limitation, in vitro diagnostic purposes, in the manufacture of food or pharmaceutical products, in medical devices or in cosmetic products.

Spectral properties

Excitation/absorption maximum, nm:	628
ε, L·mol ⁻¹ ·cm ⁻¹ :	97000
Emission maximum, nm:	642
Fluorescence quantum yield:	0.91
CF ₂₆₀ :	0.029
CF ₂₈₀ :	0.035