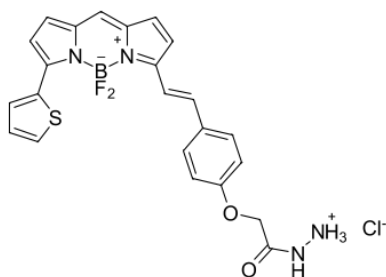


BDP 630/650 hydrazide

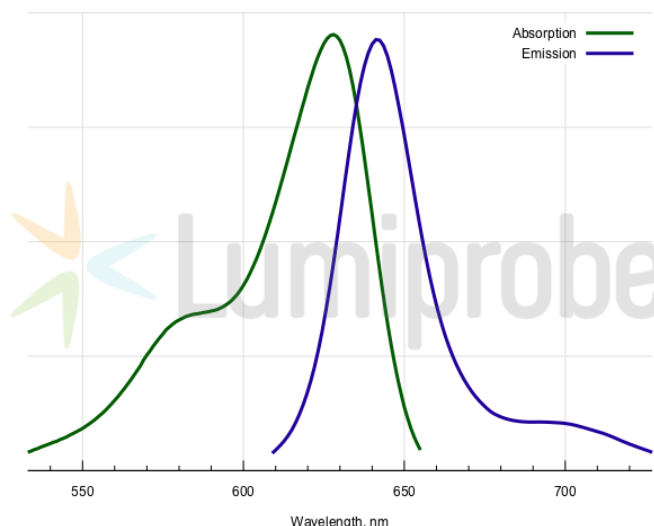
<http://www.lumiprobe.com/p/bdp-630-650-hydrazide>

BDP 630/650 is a red emitting dye which is based on the borodipyrromethene scaffold. This is a carbonyl reactive dye that is useful for the labeling of aldehydes and ketones, including sugars.

BDP 630/650 fluorophore is particularly useful for fluorescence polarization assays.



Structure of BDP 630/650 Hydrazide



Absorption and emission spectra of BDP 630/650

General properties

Appearance:	dark colored solid
Mass spec M+ increment:	446.1
Molecular weight:	500.76
Molecular formula:	C ₂₃ H ₂₀ N ₄ BClF ₂ O ₂ S
Solubility:	good in DMF, DMSO
Quality control:	NMR ¹ H, HPLC-MS (95%)
Storage conditions:	Storage: 24 months after receipt at -20°C in the dark. Transportation: at room temperature for up to 3 weeks. Avoid prolonged exposure to light. Desiccate.
Legal statement:	This Product is offered and sold for research purposes only. It has not been tested for safety and efficacy in food, drug, medical device, cosmetic, commercial or any other use. Supply does not express or imply authorization to use for any other purpose, including, without limitation, in vitro diagnostic purposes, in the manufacture of food or pharmaceutical products, in medical devices or in cosmetic products.

Spectral properties

Excitation/absorption maximum, nm:	628
ε, L·mol ⁻¹ ·cm ⁻¹ :	97000
Emission maximum, nm:	642
Fluorescence quantum yield:	0.91
CF ₂₆₀ :	0.029
CF ₂₈₀ :	0.035

BDP® is a trademark of Lumiprobe