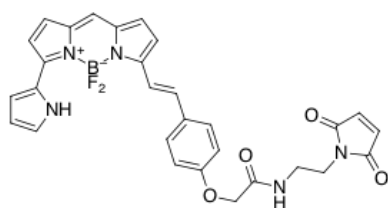


BDP 650/665 maleimide

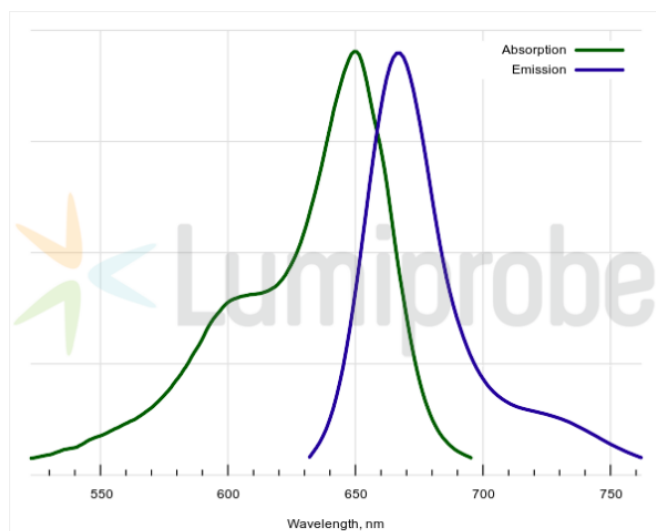
<http://www.lumiprobe.com/p/bdp-650-665-maleimide>

BDP 650/665 is a bright, red emitting fluorophore for Cyanine5 (Cy5) channel. The dye has a high molar extinction coefficient, and a good emission quantum yield. The dye is moderately hydrophobic, but can be used to label biomolecules in aqueous environment, so it is a good alternative to Cy5.

Maleimide is a thiol reactive group. The compound can be used for the labeling of cysteine residues of proteins and peptides, among other SH-containing molecules.



Structure of BDP 650/665 maleimide



Absorption and emission spectra of BDP 650/665

General properties

Appearance:	dark colored solid
Mass spec M+ increment:	555.2
Molecular weight:	555.34
Molecular formula:	C ₂₉ H ₂₄ N ₅ BF ₂ O ₄
Solubility:	good in DMF, DMSO, low in water
Quality control:	NMR ¹ H, HPLC-MS (95%)
Storage conditions:	Storage: 24 months after receipt at -20°C in the dark. Transportation: at room temperature for up to 3 weeks. Avoid prolonged exposure to light. Desiccate.

Spectral properties

Excitation/absorption maximum, nm:	649
ε, L·mol ⁻¹ ·cm ⁻¹ :	94000
Emission maximum, nm:	667
Fluorescence quantum yield:	0.52
CF ₂₆₀ :	0.04
CF ₂₈₀ :	0.04

BDP® is a trademark of Lumiprobe