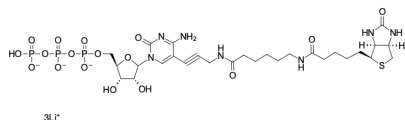


## Biotin-11-CTP

<http://www.lumiprobe.com/p/biotin-11-ctp>

Biotin-11-CTP like other biotinylated nucleotides can be enzymatically incorporated into RNA. Biotin-11-CPT contains 11-atoms linker between biotin and CTP which improves avidin or streptavidin labeling in the related detection techniques.



**Structure of Biotin-11-CTP**

### General properties

Appearance: off white solid

Molecular weight: 893.48

Molecular formula: C<sub>28</sub>H<sub>41</sub>Li<sub>3</sub>N<sub>7</sub>O<sub>17</sub>P<sub>3</sub>S

Solubility: good in water

Quality control: NMR <sup>1</sup>H and HPLC-MS (95+%)

Storage conditions: 24 months after receipt at -20°C in the dark. Transportation: at room temperature for up to 3 weeks. Desiccate.