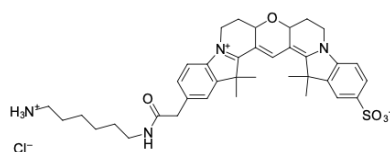


Cyanine3B amine

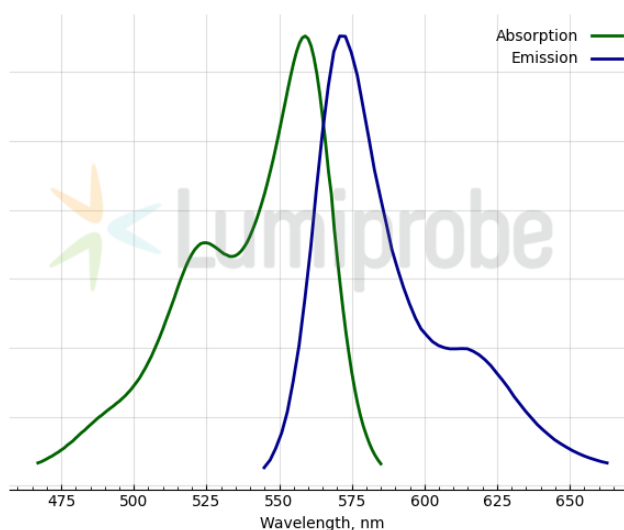
<http://www.lumiprobe.com/p/cy3b-amine>

Cyanine3B is a yellow-emitting cyanine dye that is an improved version of the Cyanine3 fluorophore with significantly higher fluorescence quantum yield and photostability.

This product is an amine-containing fluorescent dye. The amine group is separated from the fluorophore by a relatively long linker that facilitates conjugation. The aliphatic primary amine group can be coupled with various electrophiles (activated esters, epoxides, etc.) and used in enzymatic transamination labeling.



Structure of Cyanine3B amine



Cyanine3B absorbance and emission spectra

General properties

Appearance:	dark red powder
Molecular weight:	695.33
Molecular formula:	C ₃₇ H ₄₇ ClN ₄ O ₅ S
Solubility:	good in DMF, DMSO
Quality control:	NMR ¹ H and HPLC-MS (95+%)
Storage conditions:	24 months after receipt at -20°C in the dark. Transportation: at room temperature for up to 3 weeks. Desiccate.

Spectral properties

Excitation/absorption maximum, nm:	559
ε, L·mol ⁻¹ ·cm ⁻¹ :	121000
Emission maximum, nm:	571
Fluorescence quantum yield:	0.68
CF ₂₆₀ :	0.044
CF ₂₈₀ :	0.077