

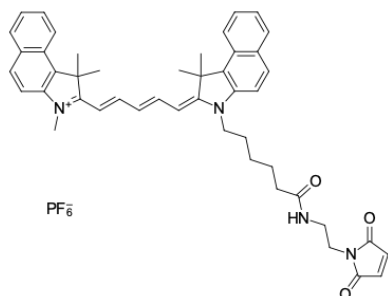
Cyanine5.5 maleimide

<http://www.lumiprobe.com/p/cy55-maleimide>

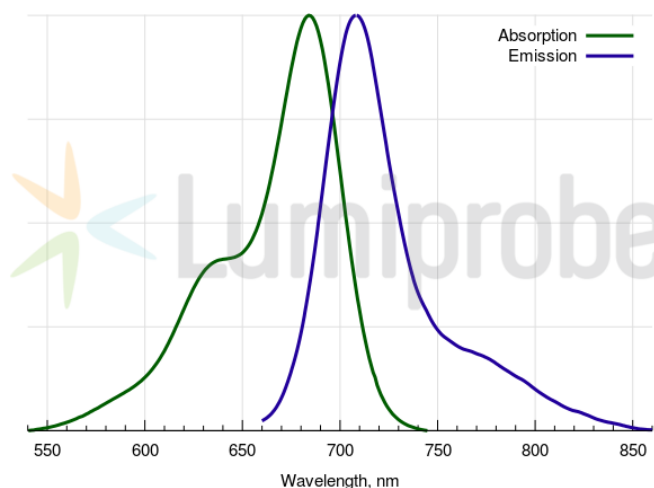
Cyanine5.5 maleimide is a thiol reactive dye which is capable of selective labeling of sulfhydryl groups in proteins, an analog of Cy5.5® maleimide.

Near infrared emission of Cyanine5.5 makes this dye suitable for bioimaging applications.

Cyanine5.5 can replace Cy5.5® and DyLight 680.



Structure of Cyanine5.5 maleimide



Cyanine5.5 absorbance and emission spectra

General properties

Appearance:	dark blue powder
Molecular weight:	850.89
CAS number:	1593644-50-8
Molecular formula:	C ₄₆ H ₄₉ F ₆ N ₄ O ₃ P
IUPAC name:	1H-Benz[e]indolium, 2-[5-[3-[6-[[2-(2,5-dihydro-2,5-dioxo-1H-pyrrol-1-yl)ethyl]amino]-6-oxohexyl]-1,3-dihydro-1,1-dimethyl-2H-benz[e]indol-2-ylidene]-1,3-pentadien-1-yl]-1,1,3-trimethyl-
Solubility:	soluble in organic solvents (DMSO, DMF, dichloromethane), practically insoluble in water (< 1 uM, < 1 mg/L)
Quality control:	NMR ¹ H, HPLC-MS (95%)
Storage conditions:	Storage: 24 months after receipt at -20°C in the dark. Transportation: at room temperature for up to 3 weeks. Avoid prolonged exposure to light. Desiccate.

Spectral properties

Excitation/absorption maximum, nm:	684
ε, L·mol ⁻¹ ·cm ⁻¹ :	198000
Emission maximum, nm:	710
Fluorescence quantum yield:	0.2
CF ₂₆₀ :	0.07
CF ₂₈₀ :	0.03

Cy® is a trademark of Cytiva.