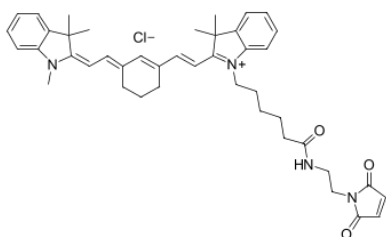


## Cyanine7 maleimide

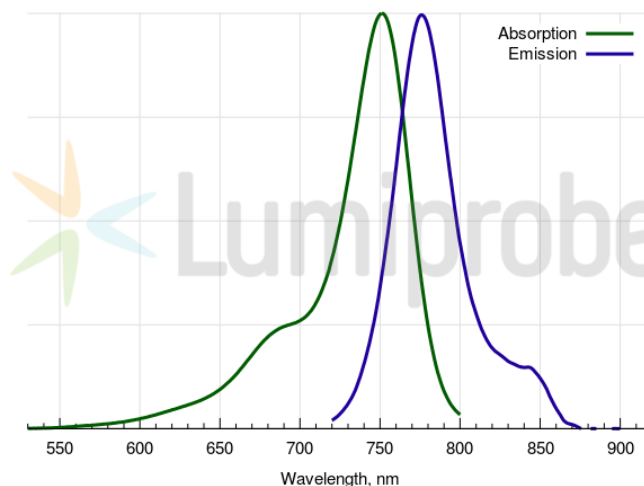
<http://www.lumiprobe.com/p/cy7-maleimide>

Near-infrared, sulfhydryl reactive Cyanine7 dye, an analog of Cy7® maleimide.

This reagent allows to attach near infrared Cyanine7 dye to proteins with free sulfhydryl groups. Labeled proteins thus obtained are used in NIR bioimaging applications. NIR imaging systems can be used to visualize distribution of labeled proteins in tissues even in live organism.



Structure of Cyanine7 maleimide



Cyanine7 absorbance and emission spectra

### General properties

Appearance:	green powder
Molecular weight:	707.34
CAS number:	2120392-49-4 (without anion)
Molecular formula:	C <sub>43</sub> H <sub>51</sub> ClN <sub>4</sub> O <sub>3</sub>
Solubility:	soluble in organic solvents (DMSO, DMF, dichloromethane), low solubility in water
Quality control:	NMR <sup>1</sup> H, HPLC-MS (95%)
Storage conditions:	Storage: 24 months after receipt at -20°C in the dark. Transportation: at room temperature for up to 3 weeks. Avoid prolonged exposure to light. Desiccate.

### Spectral properties

Excitation/absorption maximum, nm:	750
ε, L·mol <sup>-1</sup> ·cm <sup>-1</sup> :	199000
Emission maximum, nm:	773
Fluorescence quantum yield:	0.3
CF <sub>260</sub> :	0.022
CF <sub>280</sub> :	0.029

Cy® is a trademark of GE Healthcare.