

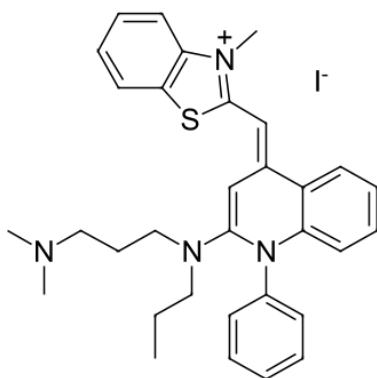
## dsGreen for Real-Time PCR, 100×

<http://www.lumiprobe.com/p/dsgreen-realtime-pcr>

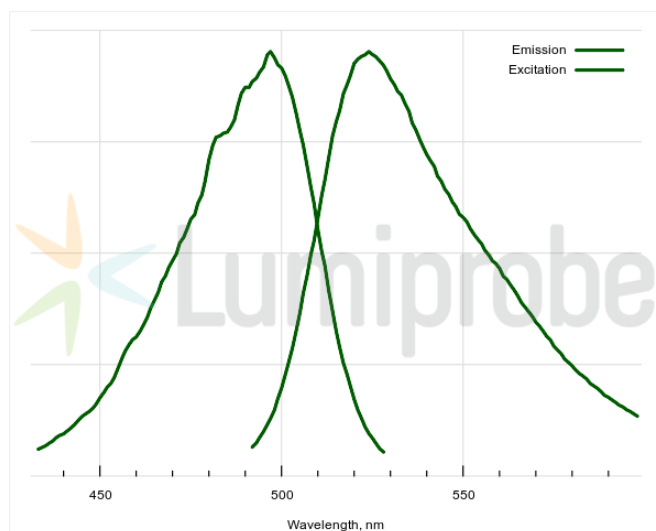
dsGreen is a very sensitive dsDNA detection dye. High sensitivity, and high selectivity for dsDNA allow to use dsGreen as a universal dsDNA detection reagent for qPCR. No need to use labeled probes to detect amplification with dsGreen – unlabeled primers are sufficient.

Unlike other preparations of dsGreen provided by Lumiprobe for gel staining purposes, this formulation is specially designed to be used in real-time PCR experiments. Specific features are:

- Concentration of the dye is optimized for qPCR and carefully adjusted for reproducible results from lot to lot
- PCR tested preparation – quality guaranteed
- Low fluorescence background – high fluorescence intensity gain



**dsGreen structure**



**Excitation and emission spectra of dsDNA complex with dsGreen**

### General properties

Appearance:	light orange solution
Quality control:	NMR $^1\text{H}$ , HPLC-MS (95%), PCR testing
Storage conditions:	Storage: 24 months after receipt at $-20^\circ\text{C}$ in the dark. Transportation: at room temperature for up to 3 weeks. Avoid prolonged exposure to light.
Legal statement:	This Product is offered and sold for research purposes only. It has not been tested for safety and efficacy in food, drug, medical device, cosmetic, commercial or any other use. Supply does not express or imply authorization to use for any other purpose, including, without limitation, in vitro diagnostic purposes, in the manufacture of food or pharmaceutical products, in medical devices or in cosmetic products.

### Spectral properties

Excitation/absorption maximum, nm:	490
$\epsilon$ , $\text{L}\cdot\text{mol}^{-1}\cdot\text{cm}^{-1}$ :	73000
Emission maximum, nm:	524
Fluorescence quantum yield:	0,8