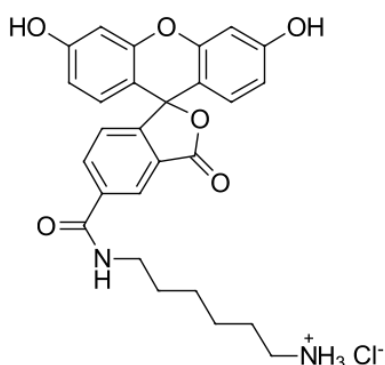


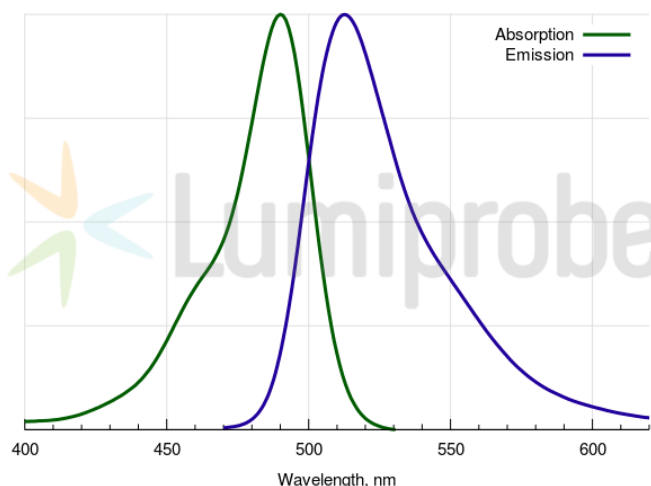
FAM amine, 5-isomer

<http://www.lumiprobe.com/p/fam-amine-5>

Fluorescein (FAM) amine, isomerically pure dye (5-isomer). Unlike fluoresceinamine, this reagent contains a linker arm with an aliphatic amine group that is more reactive. It can react with electrophilic reagents like activated esters or epoxides, and be involved in enzymatic transamination.



Structure of 5-FAM amine



FAM absorbance and emission spectra

General properties

Appearance:	yellow solid
Molecular weight:	510.97
CAS number:	2183440-41-5 (hydrochloride), 138589-19-2
Molecular formula:	C ₂₇ H ₂₇ N ₂ ClO ₆
IUPAC name:	6-aminohexylaminocarbonylfluorescein hydrochloride
Solubility:	good in methanol, DMSO, DMF
Quality control:	NMR ¹ H, HPLC-MS (95%)
Storage conditions:	24 months after receipt at -20°C in the dark. Transportation: at room temperature for up to 3 weeks. Avoid prolonged exposure to light. Desiccate.

Spectral properties

Excitation/absorption maximum, nm:	492
ε, L·mol ⁻¹ ·cm ⁻¹ :	74000
Emission maximum, nm:	517
Fluorescence quantum yield:	0.93
CF ₂₆₀ :	0.22
CF ₂₈₀ :	0.17