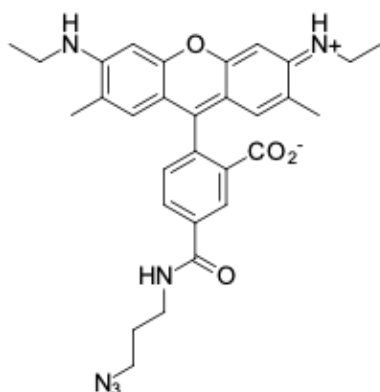


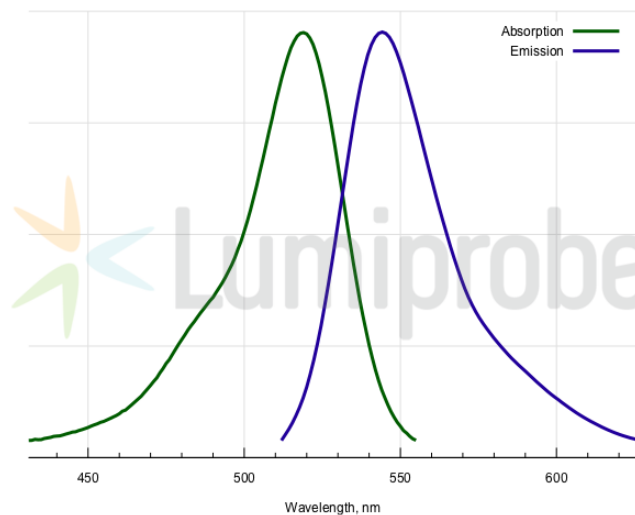
R6G azide, 5-isomer

<http://www.lumiprobe.com/p/r6g-azide-5>

R6G (rhodamine 6G) is a yellow emitting xanthene dye. It has been used for DNA sequencing before. Now this dye is often used for qPCR. This is a pure 5-isomer of R6G with azide group.



Structure of 5-R6G azide



Absorption and emission spectra for 5-R6G

General properties

Appearance:	orange to brown powder
Mass spec M+ increment:	540.3
Molecular weight:	540.61
CAS number:	2135330-71-9
Molecular formula:	C ₃₀ H ₃₂ N ₆ O ₄
Solubility:	good in DMF, DMSO, alcohols
Quality control:	NMR ¹ H, HPLC-MS (95%)
Storage conditions:	Storage: 24 months after receipt at -20°C in the dark. Transportation: at room temperature for up to 3 weeks. Avoid prolonged exposure to light. Desiccate.

Spectral properties

Excitation/absorption maximum, nm:	519
ε, L·mol ⁻¹ ·cm ⁻¹ :	116000
Emission maximum, nm:	546
Fluorescence quantum yield:	0.95
CF ₂₆₀ :	0.18
CF ₂₈₀ :	0.17