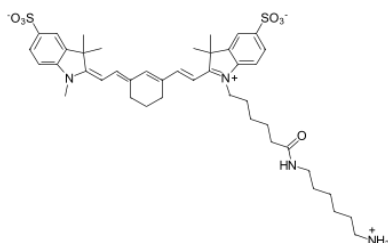


## sulfo-Cyanine7 amine

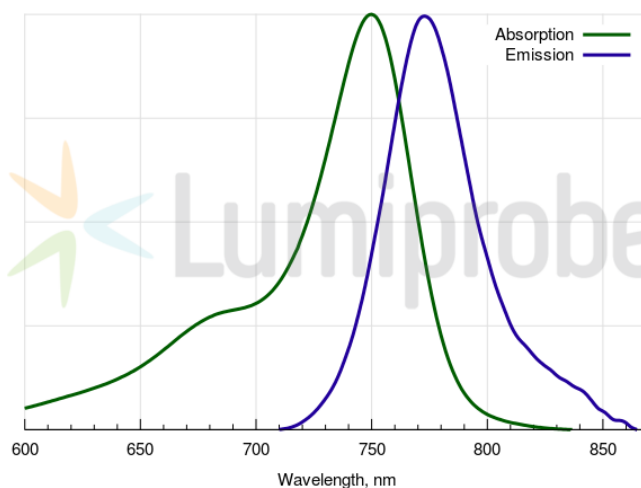
<http://www.lumiprobe.com/p/sulfo-cy7-amine>

Sulfonated amino derivative of Cyanine7 NIR dye.

This NIR dye amine can be used for the derivatization of various targets by the reaction with electrophilic groups, and also by enzymatical reactions involving transamination.



**Sulfo-Cy7 amine structure**



**Sulfo-Cyanine7 absorbance and emission spectra**

### General properties

Appearance:	dark green powder
Molecular weight:	807.07
CAS number:	2236573-39-8
Molecular formula:	C <sub>43</sub> H <sub>58</sub> N <sub>4</sub> O <sub>7</sub> S <sub>2</sub>
Solubility:	very poorly soluble in water (0.50 mM = 40 mg/L), good in DMF, DMSO
Quality control:	NMR <sup>1</sup> H, HPLC-MS (95%)
Storage conditions:	Storage: 24 months after receipt at -20°C in the dark. Transportation: at room temperature for up to 3 weeks. Avoid prolonged exposure to light.

### Spectral properties

Excitation/absorption maximum, nm:	750
ε, L·mol <sup>-1</sup> ·cm <sup>-1</sup> :	240600
Emission maximum, nm:	773
Fluorescence quantum yield:	0.24
CF <sub>260</sub> :	0.04
CF <sub>280</sub> :	0.04

Cy® is a trademark of GE Healthcare.