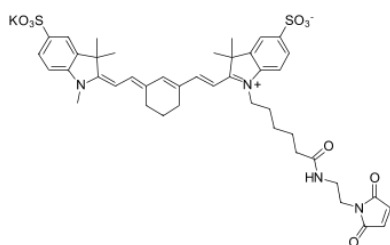


## sulfo-Cyanine7 maleimide

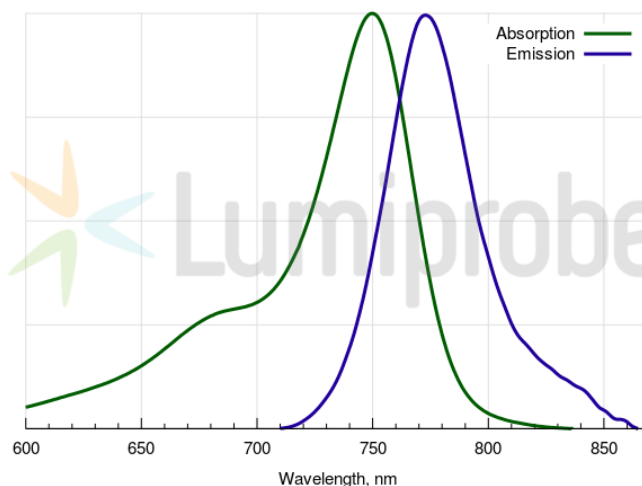
<http://www.lumiprobe.com/p/sulfo-cy7-maleimide>

A reactive dye with a maleimide group for the labeling of thiol groups of proteins and other biomolecules, an analog of Cy7® maleimide.

sulfo-Cyanine7 is a hydrophilic near-infrared fluorophore with a rigidizing ring in its heptamethine chain that improves its photophysical properties. A great dye for various applications, including NIR imaging.



**Sulfo-Cyanine7 maleimide structure**



**Sulfo-Cyanine7 maleimide absorbance and emission spectra**

### General properties

Appearance:	dark green powder
Mass spec M+ increment:	868.2
Molecular weight:	869.10
CAS number:	2183440-60-8 (potassium salt), 2183440-59-5 (inner salt)
Molecular formula:	C <sub>44</sub> H <sub>48</sub> KN <sub>4</sub> O <sub>6</sub> S <sub>2</sub>
IUPAC name:	1-[2-(6-{2-[(E)-2-[(E)-3-[(E)-2-[1-Methyl-3,3-dimethyl-5-(oxysulfonyl)-2-indolylidene]ethylidene]-1-cyclohexen-1-yl]ethenyl]-3,3-dimethyl-5-(oxysulfonyl)-3H-indol-1-yl]hexanoylamino)ethyl]-1H-pyrrole-2,5-dione, potassium salt
Solubility:	Good in water, DMF, DMSO. Low in non-polar organic solvents.
Quality control:	NMR <sup>1</sup> H, HPLC-MS (95%)
Storage conditions:	Storage: 24 months after receipt at -20°C in the dark. Transportation: at room temperature for up to 3 weeks. Avoid prolonged exposure to light. Desiccate.

### Spectral properties

Excitation/absorption maximum, nm:	750
ε, L·mol <sup>-1</sup> ·cm <sup>-1</sup> :	240600
Emission maximum, nm:	773
Fluorescence quantum yield:	0.24
CF <sub>260</sub> :	0.04
CF <sub>280</sub> :	0.04

Cy® is a trademark of GE Healthcare.